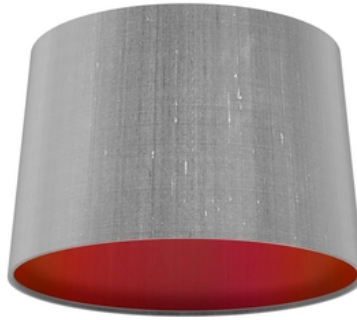


THE
Light Shade
STUDIO

MADE IN BRITAIN

Tapered Drum 20cm Shade Two Tone



A contemporary tapered drum shade with a clean rolled edge finish, shown here with a luxurious handwoven 100% silk dupion fabric, manufactured by hand in our UK workshop. Our extensive palette of fabrics includes 100% silk dupions, silk linens and smooth satins.

Creating a striking two tone effect, the shade is lined with a choice of any silk fabrics from our stunning colour palette. Why not build your own truly personalised lampshade using our Customise tool?

The shade features a 42mm (ES) gimble with a 29mm reducer (BC or SES), fixed at the base of the shade and designed for use with a wall, table or floor lamp.

Our bespoke or customised light fitting items are not covered by our standard returns policy. These are 'made to measure' light fittings that are made to your individual requirements and cannot be resold by us. We will work with you and do our utmost to make sure you are 100% satisfied with your order before your light is made, but regret we are unable to offer refunds on bespoke fittings after the initial 24 hour cooling off period. Our production and delivery time for bespoke items is 2-3 weeks. (None of the above affects your statutory rights where goods are faulty or not as described).

Product code: **TAP2099**

Dimensions

Diameter: 200mm
Height: 145mm

Lampholder

to fit E27 (non elec) + Reducer

No of Lamps

1

Wattage

60

Bulb Type

GLS

Bulb Inc

No

F/FX

F